

OCTOBER 2020 / BOATINTERNATIONAL.COM

HOW MUCH SHOULD YOU PAY YOUR CREW?

BOAT

International

US
EDITION

BEAUTY OF THE BEAST

IS 354FT *IJE* THE WORLD'S MOST
EXQUISITE EXPLORER?

**SEX, SEA AND
INSUBORDINATION**

The secret
of *Below Deck's*
success

ACE UNVEILED

Be the first to see inside
this legendary Lürssen

IMPRESS YOUR GUESTS

How to guarantee the
charter of a lifetime



DISPLAY UNTIL 10/26/2020

ShowBoats
FORUMS



Made to



measure

Owners looking to step up in size bought an off-the-peg Baglietto and tailored it exactly to their needs. *Cecile Gauert* admires the elegant and super-stylish *Severin's*

Photography Raphaël Belly (exteriors);

Riccardo Borgenni & Giuliano Sargentini (interiors)





If she were a garment, 180ft *Severin**s would be an Armani suit: elegant, spare and perfectly tailored. She has the quiet elegance of her designer, Francesco Paszkowski, who has worked with Baglietto since 1992, and the yacht's owners, who understand luxury hospitality. *Severin**s is named for a small group of five-star boutique hotels in Austria and Germany, which are part of the owners' business portfolio.

Paszkowski is a strong believer in balance and proportions, which is perhaps no more evident than on the T- (for tradition) Line he has designed for the Italian shipyard. *Severin**s builds on that tradition. Although this is the first 180-footer, she is the seventh yacht built on the same hull design platform. It was extended a couple of times since and modernized, but it has retained its quality as a seakindly displacement hull, rendered even more comfortable by Naiad 820 stabilizer fins. "*Severin**s design was focused on representing the contemporary generation of displacement yachts while retaining some of the traditional style elements – such as the side air vents at the stern – that have made the brand famous and instantly recognizable throughout the world," Paszkowski says.

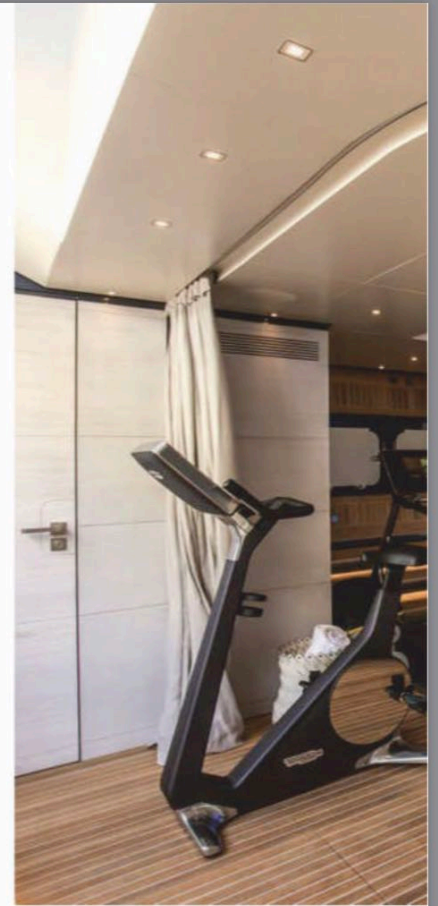
There is no mistaking Baglietto's DNA in the lines, emphasized by a blue hull and white superstructure, topped by a restrained radar mast, painted black – a signature element the Italian builder adopted a few years ago. The exterior is restrained and incorporates one of the biggest sundecks found on this size of yacht, 1,600 square feet of open space with partial shade under the radar arch. From up there, it's nothing but infinity views.

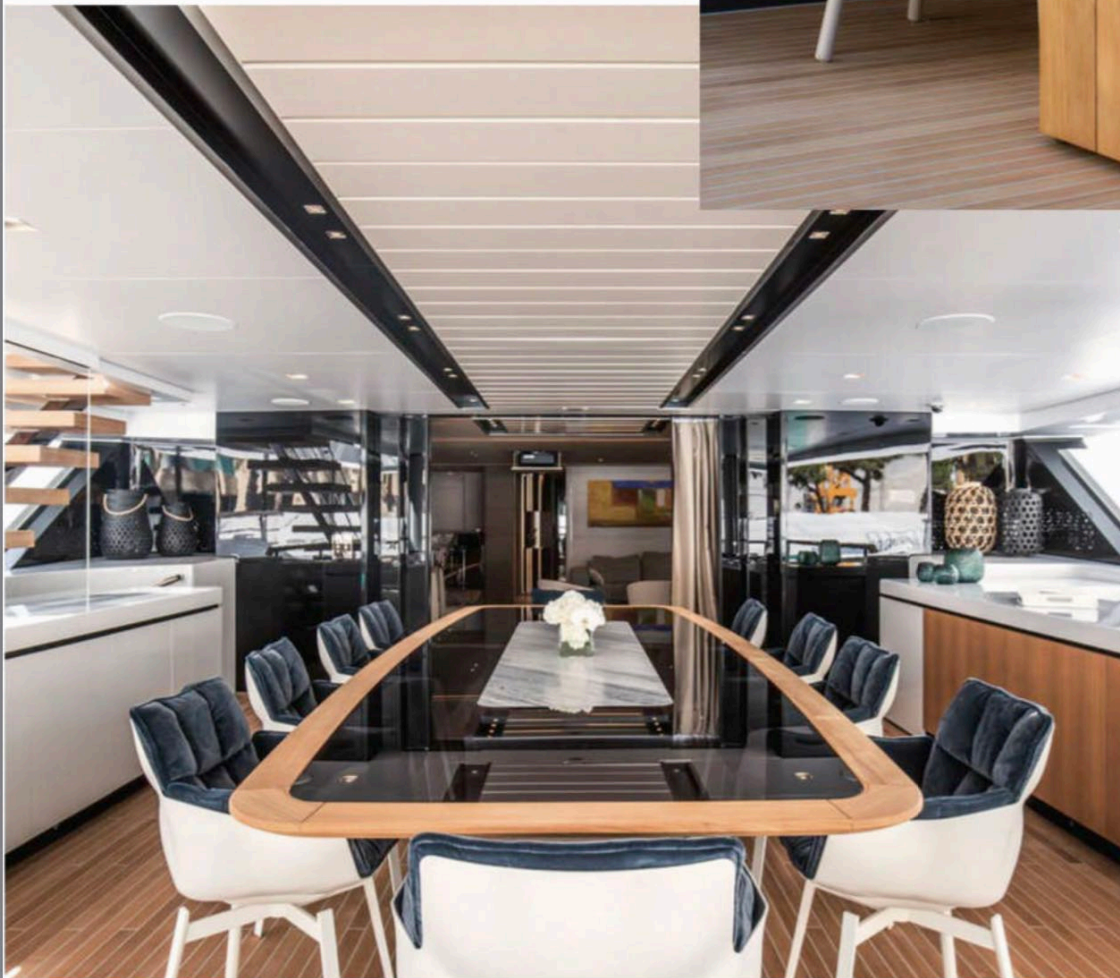
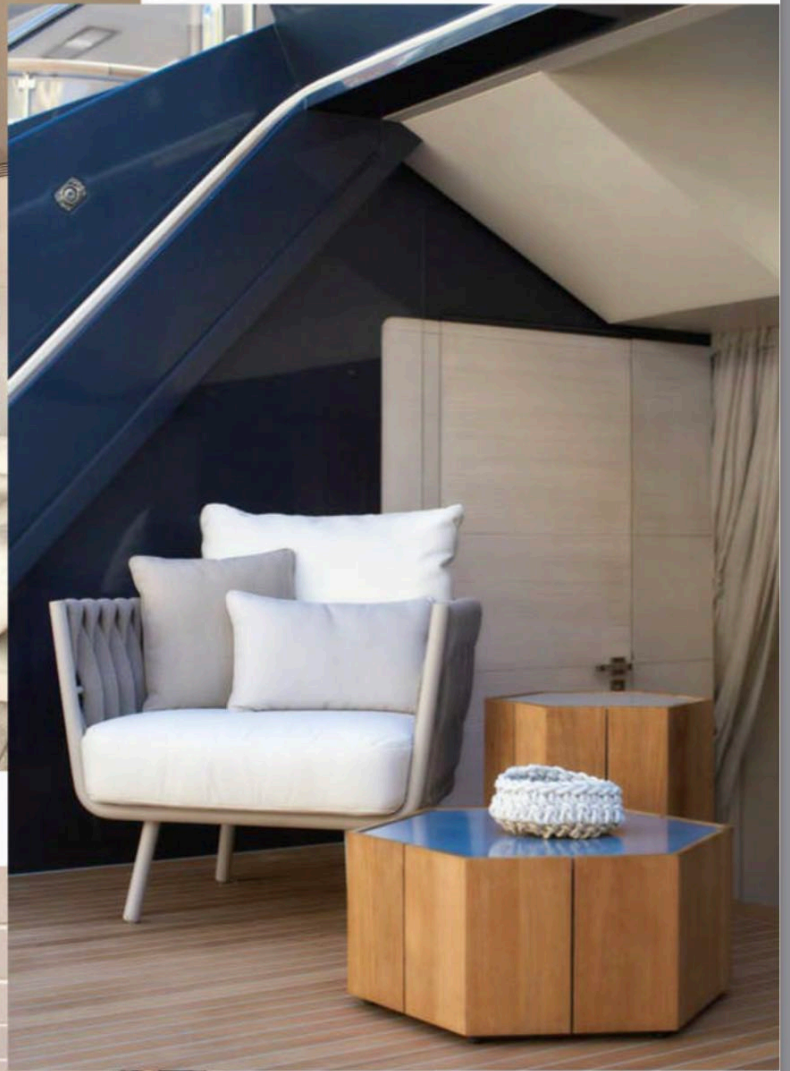
"The central section of the superstructure is rounded, sloping fore and aft, resulting in being almost invisible from the sundeck," the designer explains. "Combined with the transparency along the outer perimeter, there is no interruption to the view in all directions and it enhances visual contact with the sea and the surrounding environment."

The owners of *Severin**s have not owned a yacht of this size before, but they had quite a bit of experience with charter, according to Edmiston broker Cornelius Gerling, who helped the owner in his quest for his perfect yacht. "For a few years, we went to boat shows and looked at a lot of brokerage options, and nothing really appealed, but he liked Paszkowski's design and the older Baglietto style, yachts like *Blue Scorpion*," he says. Eventually this led them to La Spezia, Italy, home of Baglietto, where they looked at a steel hull and aluminum superstructure for a 180-footer already well under way and with the style the owner appreciated.

This is where the tailoring comes in. The hull was about 90 percent finished and the superstructure around 75 percent, says Andrea Lavagnino, who was in charge of the project completion at Baglietto. This was attractive to the owner's team, as they would not have to start from zero. But while a lot appealed to them, including the impressive interior volume (owing to the 33ft beam and ample deck height) and the spacious sundeck, they had precise ideas on how to make this budding yacht work for their family.

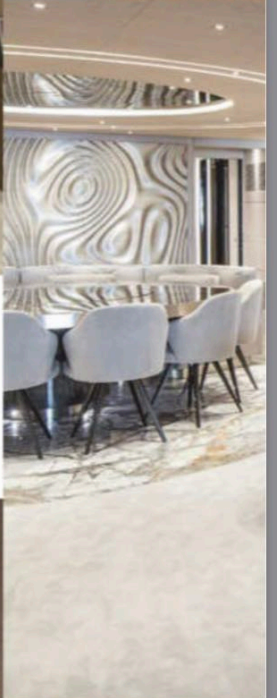
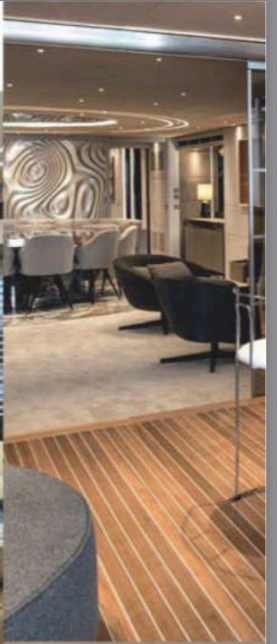
The original layout had all guest cabins on the main deck and the owner's suite split over main and lower deck. The rest of the lower deck was dedicated to a gym, galley and, forward of the well-insulated engine room, to the crew cabins and mess. The owner wanted to keep the family together on one deck and allow guests their own space on





Top left: the beach club has a gym area and a spectacular video wall with nine 4K-resolution screens. Left: the upper deck aft features alfresco dining, with the table base a custom design by Francesco Paszkowski and chairs by B&B Italia





The main salon (above) is on the upper deck and doubles as a cinema, with a large screen extending down from the ceiling. The salon has one of the two indoor bar areas, featuring Foglizzo leather and bronze glass





a different deck. The changes were significant enough to warrant about six months of new drawings, engineering and hot metal work. “The GA is quite different from the standard ones that you can find on boats of this size, but it is quite interesting for family use and also charter use,” Lavagnino says.

One of the enticing features is the beach club, which is connected by a staircase to an indoor-outdoor lounge space on the main deck. The 600-square-foot area is fitted with a steam shower, bar and gym, and a dive locker. It opens on the transom and the starboard side, where tenders can dock alongside to pick up or drop off passengers without disturbing anyone lounging on the bathing platform. This modification was



**“SEVERIN’S OWNERS HAD
A VERY PRECISE IDEA
OF HOW THEIR YACHT
INTERIOR SHOULD LOOK”**

requested by the owner’s team. “We opened the side as well and added windows there,” Gerling says.

Amid the restrained decor of blond teak is an eye-catching video wall. Videoworks created this LED wall using nine 49-inch display screens with 4K resolution, spanning an area of approximately 65 square feet. It can be used to create a mood with various scenes or to view films and television programs stored on the yacht’s servers.

Internal stairs connect the beach club directly to the aforementioned indoor-outdoor bar area on the main deck. This convertible winter garden is finished with teak flooring and the ceiling treatment is consistent with the aft deck as well to emphasize continuity. The exterior doors slide neatly into the superstructure to open up the bar to the outside or close it off to keep air conditioning in. Another set of doors separates it from the main salon, if desired.

Forward of the winter garden is the main salon and interior dining area. The owners worked with designer Margherita Casprini from the Paszkowski studio on developing a subtle, pleasant and comfortable interior. A striking bar incorporating Foglizzo leather and smoked glass is a custom design by Paszkowski. The graceful bar stools are by Cassina.

“Severin’s owners had a very precise idea of how their yacht’s interior should look,” Casprini says. “The owner’s brief for a welcoming and elegant interior was achieved by putting an emphasis on light neutral hues, designing some unique furniture pieces, matching the same materials in different ways while keeping the same atmosphere everywhere.” A sophisticated lighting plan underlines textures and interesting shapes and includes LED stripes and backlit solutions. “Polished and matt oak was used for the floor and combines with brushed larch with a 3D texture selected for the walls,” she says. The design studio worked with



The dining table and chairs on the main deck were custom-made by Minotti. The inner section of the table has a bronze mirror finish and rotates. The feature wall is wood with a champagne metal finish

Due V Laccature, a workshop based in Rome that specializes in particular 3D finishing effects, on the art wall in the dining room.

While sophisticated, the design is also meant to make the yacht welcoming for a family. "The large dining table on these yachts can be very formal," Gerling says, and to make it less so, the owners had the idea to have a comfortable C-shaped couch on one side of the dining table.

To keep the large open spaces with ceiling heights from 6ft 10 inches to 7ft both interesting and more intimate, the designers used various materials to delineate areas. For instance, underneath the round dining table is a beautiful piece of gray-gold marble with thin inserts in mirrored bronze.

About one-third of the main deck is dedicated to the owners' apartment, which comprises three cabins. The master suite proper is all the way forward on the main deck, an inviting cocoon of circular space with the bed at its center. The en-suite bathroom is equally elegant with fixtures by Dornbracht and a relaxing ambiance.

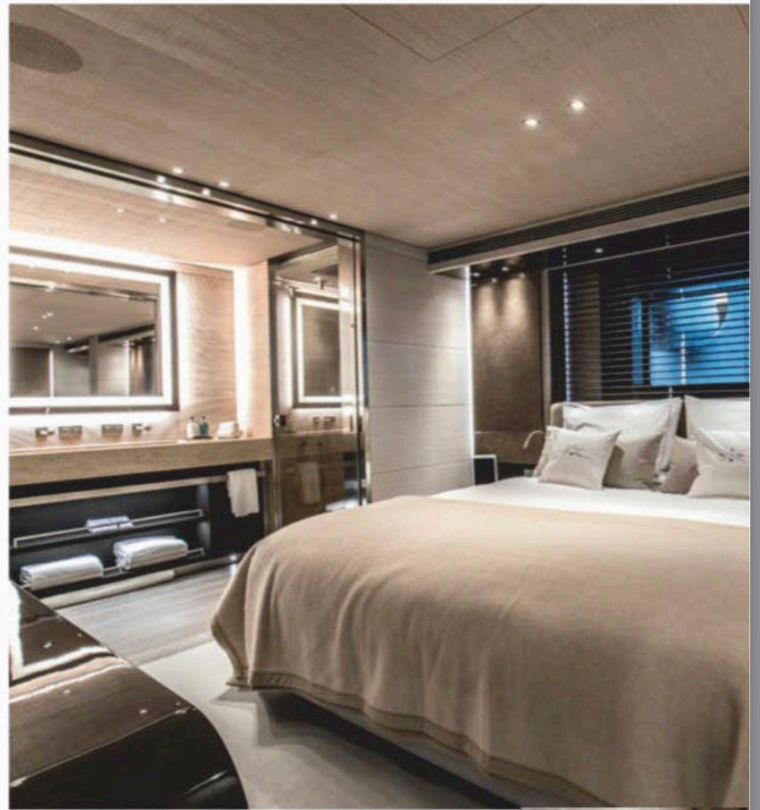
The yacht has an elevator serving three decks that is not only useful but beautiful. "The lift lobby features a golden spider marble column, which goes from the lower to the upper deck and houses the glass lift. The stone flooring matches with the walls surrounding the lift," Casprini points out. The adjacent staircase combines dark oak, Alcantara and bronze mirror risers. On the lower deck, where two VIPs are located, the elevator cleverly opens on two sides, affording passage to the crew, whose cabins are forward on the lower deck, as well as aft into the guest area.

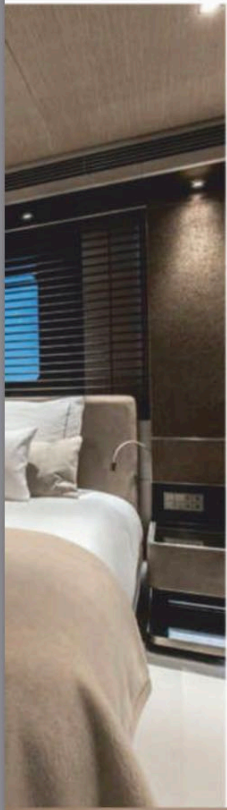
The bridge deck offers more great space for family time. Beyond the sky lounge door is a generous deck for outdoor dining with room for after-dinner drinks and coffee. The cozy lounge itself doubles as a cinema room equipped with a 90-inch screen and a 4K Sony projector that disappear neatly into the ceiling. Also on this deck is a sixth guest cabin, which is currently equipped with a Pullman berth and can be used by children as a playroom.

The same blend of technology and elegance pervades the wheelhouse. "We had a few meetings with the owner's representative to discuss the design and technology to apply to this vessel and to understand what the owner was looking for," says Paolo Tagliapietra, yachting division manager for Telemar, the company that developed the custom integrated bridge. The result is a streamlined foil bridge with five 26-inch screens displaying everything from radars, monitoring systems and engines to cameras.

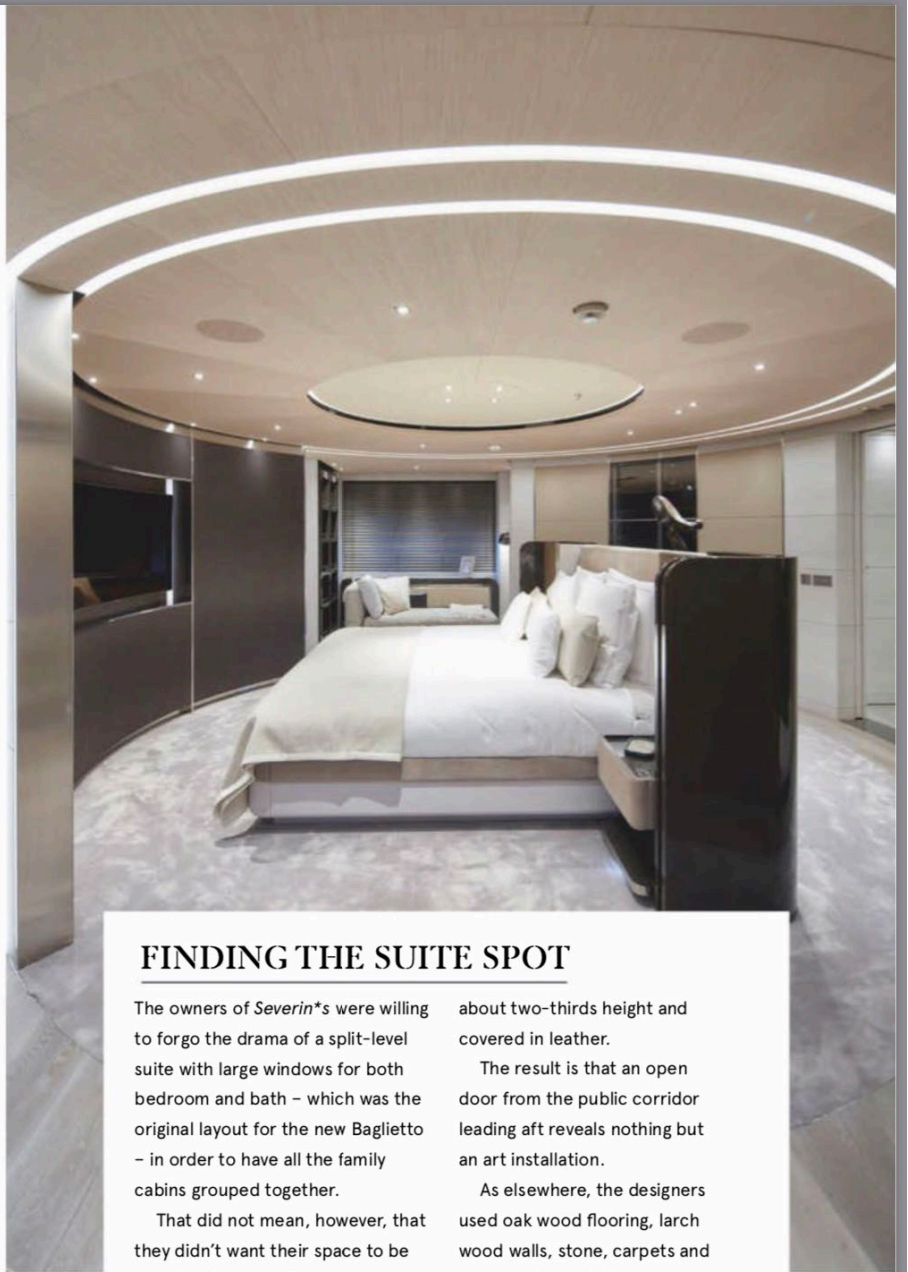
The pièce de résistance, however, is that sundeck. There is room up there for a 37-square-foot pool with a swim-up bar on one side and a vast sunpad on the other. An exterior television screen rotates fully to face either the pool or the casual dining area centrally located under the shade of the radar arch. Aft is a lot more room to configure loose furniture in different ways, to set up yoga mats or gym equipment or even a portable DJ set for parties.

From here to its lower deck, *Severin*'s is unquestionably an accomplished platform for fun in the sun with a great deal of elegance – and a perfect fit. ■





Left: this VIP cabin, situated amidships and to port on the lower deck, shows the Foglizzo leather that covers the headboards and the bronzed metal finish on the walls surrounding the bedside tables. Right: the area around the bed in the master is distinguished by a circular carpet and ceiling lighting



FINDING THE SUITE SPOT

The owners of *Severin's* were willing to forgo the drama of a split-level suite with large windows for both bedroom and bath – which was the original layout for the new Baglietto – in order to have all the family cabins grouped together.

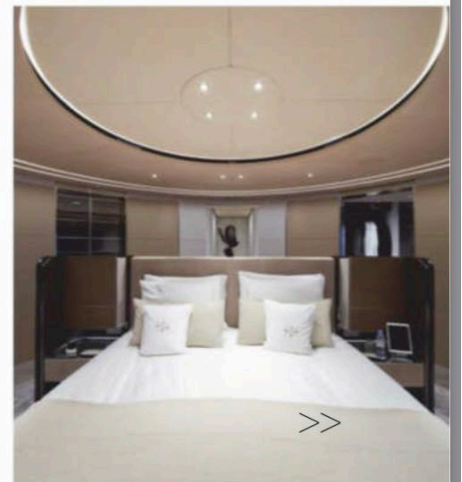
That did not mean, however, that they didn't want their space to be special. Designers Francesco Paszkowski and Margherita Casprini responded by reshaping the entire suite and radiating the various elements – office, a walk-in wardrobe, sitting area and spacious bath adorned in coffee-brown marble – off of a central point.

The cabin itself now is round, which is both intriguing and cozy at the same time. Since the suite would lose the privacy afforded by a long and offset or angled entrance corridor, the designers devised a way to increase the privacy of the room by floating the bed in the middle, facing it forward and wrapping the head of the bed and its night stands in a curved wall

about two-thirds height and covered in leather.

The result is that an open door from the public corridor leading aft reveals nothing but an art installation.

As elsewhere, the designers used oak wood flooring, larch wood walls, stone, carpets and hard leather to delineate and highlight different spaces within a larger space. Matching shapes in the ceiling help emphasize the effect. The family cabins follow the same color scheme with shades of gray and brown.



SEVERIN* S

BAGLIETTO

SUNDECK

UPPER DECK

MAIN DECK

LOWER DECK

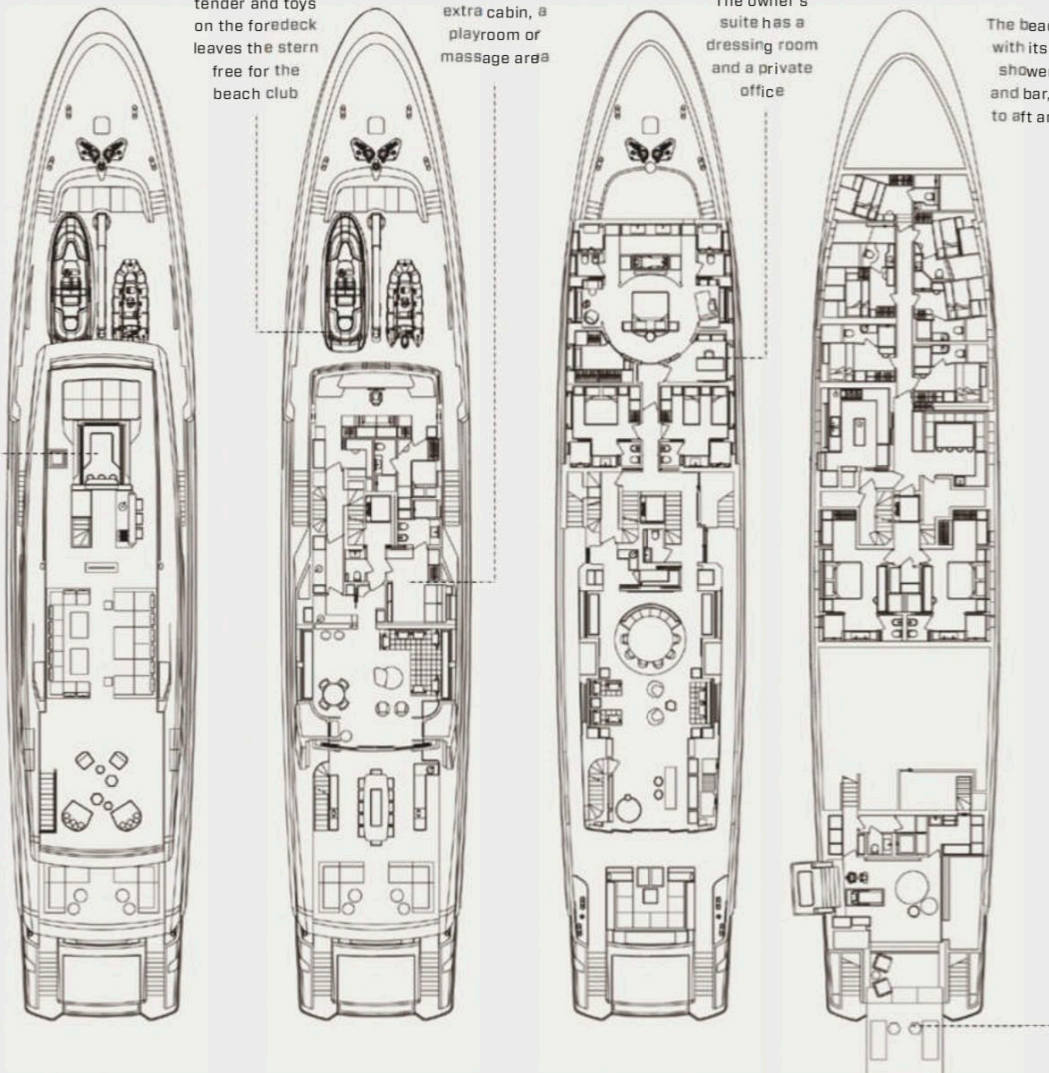
The 1,600ft² sundeck has dining and sunbed areas, a swimming pool and a bar

Storing the tender and toys on the foredeck leaves the stern free for the beach club

This room can function as an extra cabin, a playroom or massage area

The owner's suite has a dressing room and a private office

The beach club, with its steam shower, gym and bar, opens to aft and port



106

60ft
30ft
0ft

LOA 180' 5"
LWL 156' 10"
Beam 33' 5"
Draft (full load) 9' 8"
Gross tonnage
744GT

Engines
2 x 2,000kW
Caterpillar 3516C DITA
Speed max/cruise
17/12 knots
Range at 12 knots
4,500nm
Generators
3 x 143kW 400/230V

Fuel capacity
24,500 gallons
Freshwater capacity
4,755 gallons
Tenders
1 x 7.5m tender;
1 x 4.5m rescue boat

Owners/guests 12
Crew 13
Construction
Steel hull; aluminum superstructure
Classification
Lloyd's Register;
Unrestricted
Navigation MCA
LY3 Compliance

Naval architecture
Baglietto
Exterior styling
Francesco Paszkowski
Interior design
Francesco Paszkowski;
Margherita Casprini

Builder/year
Baglietto/2019
La Spezia, Italy
t: +39 0187 59831
e: sales@
baglietto.com
w: baglietto.com
For charter
edmiston.com